



HA26 RTJ PRO

**PRELIMINARY
SPECIFICATIONS
SUBJECT TO
CHANGE**



Performance & Productivity

- Very good working envelop
- Fully proportional and simultaneous movements
- Outstanding RT capabilities
- basket load capacity 250 kg

Safety & Comfort

- Safe loading / unloading at twilight thanks to Activ' Lighting System (PRO model)
- Haulotte Activ' Shield Bar

Maximized Total Cost of Ownership

- Haulotte Activ' Screen on board diagnostic tool
- Haulotte Stop Emission System wich automatically turns off & on the engine
- Easy access to all components
- Modular basket quick and easy to repair



HA26 RTJ PRO

ROUGH TERRAIN TELESCOPIC BOOMS

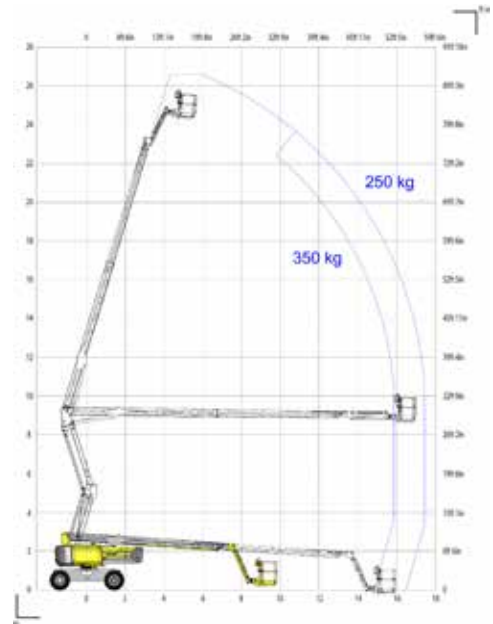
PRELIMINARY
SPECIFICATIONS
SUBJECT TO
CHANGE

Haulotte
GROUP

TECHNICAL DATA

HA26 RTJ PRO

Working height	26.4 m
Platform height	24.4 m
Horizontal outreach	17.5 m
Up and over clearance	9.3 m
Lift capacity	250 kg
F x G Platform size	2.44 x 0.91 m
A Length - stowed	11.8 m
B Width	2.48 m
Height - stowed	2.97 m
H Transport length	9.4 m
C Transport height	2.98 m
Vertical jib rotation	133° (+67°/-66°)
Platform rotation	180°
Turntable rotation	360° continuous
Tailswing	0.76 cm
D Wheelbase	2.8 m
E Ground clearance	38 cm
Tilt	4 °
Drive speed	5 km/h
Gradeability	45 %
Tires - solid rough terrain	385/65-22,5
Turning radius - outside	4.35 m
Power source	Kubota
Weight	15500 kg



STANDARD EQUIPMENT

- 4 wheel drive
- 4 wheel steering
- Front oscillating axle
- Automatic differential wheel lock
- 250 kg / 550 lbs (2 persons) load capacity unrestricted working envelop
- 4 simultaneous movements
- Haulotte Stop Emission System : automatic engine stop system
- Rotating beacon
- Modular standard basket 2.44 m x 0.91m
- Drop bar entry gate
- Upper control box cover
- Tool tray
- AC power to platform (110 / 230V)
- Embedded diagnostic system Haulotte Activ' Screen on lower control box, with color screen
- Swing out engine tray
- Hour meter
- Low fuel level indicator (upper & lower control box)
- Engine pre-heater with light indicator
- Sound and light alarm for tilt and load
- 12V battery / electrical control system
- Haulotte Activ' Shield Bar (standard PRO version)
- Electric pump system and emergency descent
- Travel alarm
- Universal telematics plug

OPTIONS AND ACCESSORIES

- Dual load capacity 250 / 350 kg
- Haulotte Activ' Shield Bar 2.0 (0 model)
- Lateral swing door entry gate
- Hydraulic generator 3.5 kW or 6.5 kW
- Power to platform (female plug in the basket)
- Air-line to platform
- Glazier pack
- Pipe cradle pack
- Activ' Lighting System Safe Load (0 model)
- Working light
- Biodegradable hydraulic oil
- Cold weather kit -20° / Arctic weather kit -25°C
- Hydraulic oil cooler
- Non marking tires
- Battery circuit breaker
- Anti-overspeed kit (spark arrestor, electric one-way valve)
- shipyard kit

